

Geology of the Old Town of Dubrovnik

Korbar, Tvrtko; Grgasović, Tonći; Fuček, Ladislav

Source / Izvornik: **edimentary cover of the Adria and its surroundings: from aborted rifting in the central Adriatic to the post-collisional deposition in the Dinarides, the Southern Alps, and the Pannonian basin, 2023, 131 - 139**

Book chapter / Poglavlje u knjizi

Publication status / Verzija rada: **Published version / Objavljena verzija rada (izdavačev PDF)**

Permanent link / Trajna poveznica: <https://um.nsk.hr/um:nbn:hr:245:187480>

Rights / Prava: [In copyright](#) / [Zaštićeno autorskim pravom.](#)

Download date / Datum preuzimanja: **2025-02-05**



Repository / Repozitorij:

[Repository of the Croatian Geological Survey](#)





36TH



IAS

DU
BROV
NIK

MEETING OF SEDIMENTOLOGY

FIELD TRIP GUIDEBOOK



12-16 June 2023, DUBROVNIK, CROATIA

Organized by:

Croatian Geological Society (HGD) and International Association of Sedimentologists (IAS)



Organizing Committee

Lara Wacha, **chair**, *Croatian Geological Survey, Zagreb*
Katarina Gobo, *University of Zagreb, Faculty of Science*
Nikolina Ilijanić, *Croatian Geological Survey, Zagreb*
Tvrтко Korbar, *Croatian Geological Survey, Zagreb*
Marijan Kovačić, *University of Zagreb, Faculty of Science*
Duje Kukoč, *Croatian Geological Survey, Zagreb*
Borna Lužar-Oberiter, *University of Zagreb, Faculty of Science*
Maja Martinuš, *University of Zagreb, Faculty of Science*
Slobodan Miko, *Croatian Geological Survey, Zagreb*
Davor Pavelić, *University of Zagreb, Faculty of Mining, Geology and Petroleum Engineering*
Kristina Pikelj, *University of Zagreb, Faculty of Science*
Igor Vlahović, *University of Zagreb, Faculty of Mining, Geology and Petroleum Engineering*

Scientific Committee

Igor Vlahović, **president**, *University of Zagreb, Faculty of Mining, Geology and Petroleum Engineering*
Nevena Andrić Tomašević, *Karlsruhe Institute of Technology, Germany*
Bruno Campo, *University of Bologna, Italy*
Sonia Campos Soto, *Complutense University of Madrid, Spain*
Luca Caracciolo, *FAU Erlangen-Nürnberg, Germany*
Blanka Cvetko Tešović, *University of Zagreb, Croatia*
Shahin E. Dashtgard, *Simon Fraser University, Canada*
Andrea Di Capua, *National Research Council – IGAG, Italy*
Goran Durn, *University of Zagreb, Croatia*
Gianluca Frijia, *University of Ferrara, Italy*
Massimiliano Ghinassi, *University of Padova, Italy*
Luis Gibert Beotas, *University of Barcelona, Spain*
Bosiljka Glumac, *Smith College, USA*
Antun Husinec, *St. Lawrence University, USA*
Stuart Jones, *Durham University, UK*
Tvrтко Korbar, *Croatian Geological Survey, Croatia*
Marijan Kovačić, *University of Zagreb, Croatia*
Juan Carlos Laya, *Texas A&M University, USA*
Marta Marchegiano, *University of Granada, Spain*
Cole McCormick, *Pennsylvania State University, USA*
Mardi McNeil, *Geoscience Australia, Australia*
Theresa Nohl, *University of Vienna, Austria*
Shuxin Pan, *PetroChina – NWGI, China*
Guido Pastore, *University of Milano–Bicocca, Italy*
Maximiliano Paz, *University of Saskatchewan, Canada*
Daniel A. Petráš, *Czech Geological Survey, Czech Republic*
Miquel Poyatos-Moré, *Universitat Autònoma of Barcelona, Spain*
Joanna Pszonka, *Polish Academy of Sciences – MEERI, Poland*
John J.G. Reijmer, *Vrije Universiteit Amsterdam, The Netherlands*
Valentina Marzia Rossi, *National Research Council – IGG, Italy*
Arnoud Sloodman, *Colorado School of Mines, USA*
Mirosław Slowakiewicz, *University of Warsaw, Poland*
Thomas Steuber, *Khalifa University of Science and Technology, Abu Dhabi, UAE*
Finn Surlyk, *University of Copenhagen, Denmark*
Michal Šujan, *Comenius University in Bratislava, Slovakia*
Romain Vaucher, *University of Geneva, Switzerland*
Alan Vranjković, *INA Oil Company, Croatia*
Lara Wacha, *Croatian Geological Survey, Croatia*
Guodong Wang, *PetroChina, China*
Pujun Wang, *Jilin University, China*
Valentin Zuchuat, *RWTH Aachen University, Germany*
Nadja Zupan Hajna, *Research Centre of the Slovenian Academy of Sciences and Arts, Slovenia*

Publisher: Croatian Geological Society (HGD)

For the publisher: Slobodan Miko

Editors: Tvrтко Korbar, Marijan Kovačić and Igor Vlahović

Language Editor: Julie Robson (Scotland, United Kingdom)

Digital layout: Laser Plus d.o.o

Cover design: Ana Badrić

eISBN: 978-953-6907-80-9

Reference to any paper in this publication should be followed by:

...In: Korbar, T., Kovačić, M. & Vlahović, I. (eds.): Sedimentary cover of the Adria and its surroundings: from aborted rifting in the central Adriatic to the post-collisional deposition in the Dinarides, the Southern Alps, and the Pannonian basin. 36th IAS Meeting of Sedimentology, Dubrovnik (Croatia), June 12–16, 2023, Field Trip Guidebook, pp-pp, Zagreb.

36th International Meeting of Sedimentology
June 12–16, 2023, Dubrovnik, Croatia

FIELD TRIP GUIDEBOOK

Sedimentary cover of the Adria and its surroundings

from aborted rifting in the central Adriatic to the post-collisional deposition in the Dinarides, the Southern Alps, and the Pannonian basin

Edited by: Tvrtko Korbar, Marijan Kovačić and Igor Vlahović



Contents

Foreword	I
The Editors	
Pre-conference field trips	
A1 A brief insight into the Upper Triassic to Miocene sedimentary succession of the External Dinarides, SE of Dubrovnik (southern Croatia)	3
Igor Vlahović, Antun Husinec and Božo Prtoljan	
A2 Deep-water Triassic to end-Cretaceous sedimentary succession of the Budva Zone (Montenegro)	29
Špela Goričan, Duje Kukoč, Martin Đaković, Anja Kocjančič, Tim Cifer and Aleksander Horvat	
A3 Oligocene to Pliocene depositional systems in the southern Pannonian Basin and the Dinarides Intramontane Basins.	61
Oleg Mandić, Marijan Kovačić, Nevena Andrić-Tomašević	
A4 Quaternary glaciations of the Alps-Dinarides junction	105
Manja Žebre, Petra Jamšek Rupnik, Jernej Jež, Giovanni Monegato, Uroš Stepišnik	
Mid-conference field trip (self-guided)	
B1 Geology of the Old Town of Dubrovnik	131
Tvrtno Korbar, Tonči Grgasović and Ladislav Fuček	
Post-conference field trips	
C1 Volcano-sedimentary-evaporitic rocks from an aborted Triassic rift and Cretaceous to Palaeogene Adriatic Carbonate Platform successions: OAEs, K–Pg boundary and the Palaeocene platform top (central Dalmatian islands, Croatia)	143
Tvrtno Korbar, Mirko Belak, Ladislav Fuček, Jelena Španiček, Thomas Steuber	
C2 Mesozoic-Cenozoic Dinaric foreland basins	161
Borna Lužar-Oberiter, Katarina Gobo, Duje Kukoč, Krešimir Petrinjak, Šimun Aščić, Robert Šamarija, Anja Kocjančič, Ervin Mrinjek, Lucija Markotić	
C3 Mass wasting deposits: From ancient catastrophic submarine collapses to recent alluvial fans: Julian Alps, Soča Valley and the Adriatic coast	197
Andrej Šmuc, Boštjan Rožič, Andrej Novak, Krešimir Petrinjak, Željko Pogačnik, Timotej Verbovšek, Marko Vrabc, Tomislav Popit	
C4 Quaternary of the island of Mljet	229
Ivan Razum, Petra Bajo, Slobodan Miko, Ozren Hasan, Nikolina Ilijanić	

Foreword

Dear colleagues,

Forty years after the 4th IAS Regional Meeting that was held in Split (1983), and twenty years after the 22nd IAS Meeting of Sedimentology that was held in Opatija (2003), the international sedimentological community decided to gather again in Croatia for the 36th IAS Meeting of Sedimentology in Dubrovnik.

Field trips are an integral and very important part of every IAS meeting, and we are proud to highlight the guidebooks of the meetings held in Croatia:

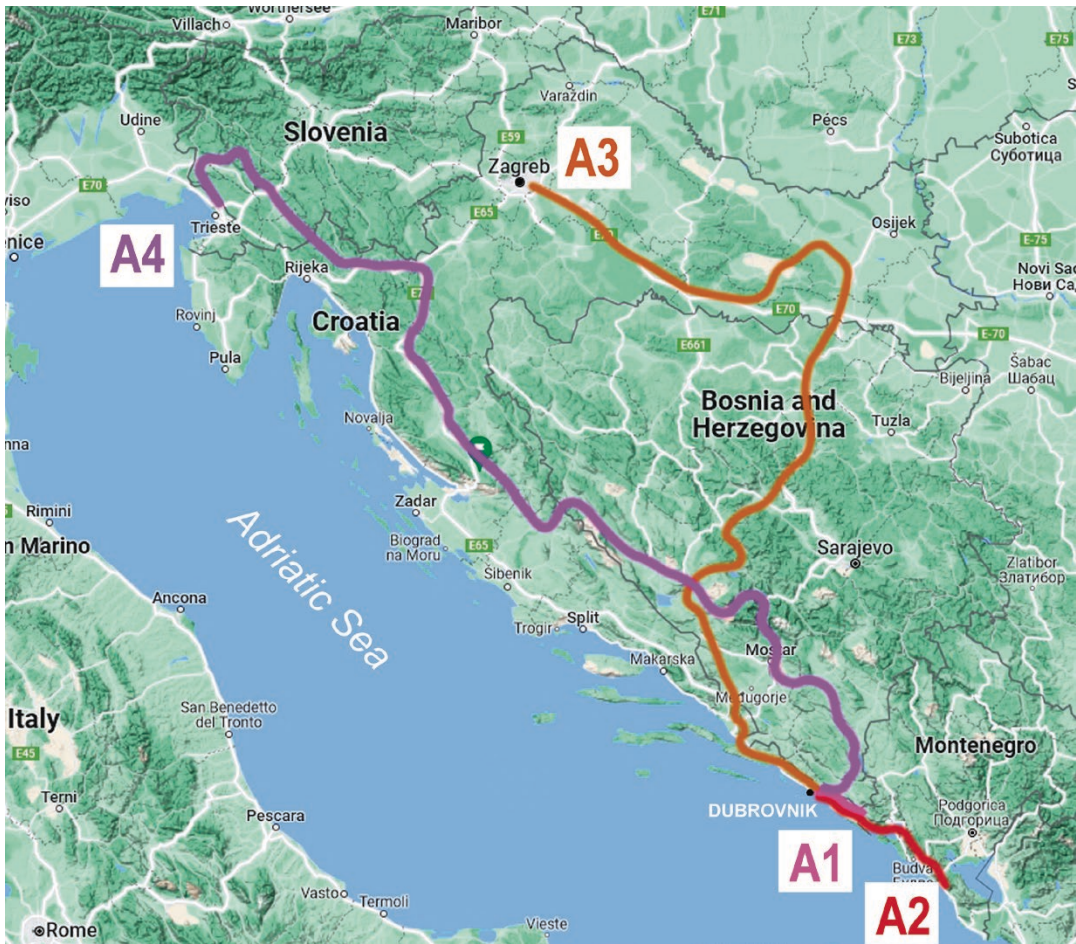
In 1983, **Ljubomir Babić** and **Vladimir Jelaska** edited a guidebook with field trips from Istria to Dalmatia and thus enabled the authors to somehow break the ice for international cooperation in these areas but also to chart the path for numerous sedimentological successors in Croatia and Slovenia that contributed and are still contributing to the completion of knowledge about the geological evolution of the region;

In 2003, **Igor Vlahović** and the late **Josip Tišljar**, edited a guidebook with field trips focused on more stratigraphical and sedimentological details and extended sedimentological interests all the way to the Alps (Slovenia) and the Pannonian Basin (northern Croatia), holding the door wide open for international cooperation.

Given the fact that in the eastern Adriatic region and its wider hinterland, Phanerozoic sedimentary rocks cover the vast majority of the territory, the region is still underexplored. That is why we also invited authors that traditionally deal with Mesozoic basinal deposits that crop out in Montenegro, as well as authors working on mass wasting deposits and Quaternary glacial, colluvial, lacustrine and aeolian sediments. Thus, even after 40 years of presenting the sedimentology in the region, we manage to offer new sedimentological delicacies that the authors have packaged into nine field trips through Croatia, Montenegro, Bosnia and Herzegovina and Slovenia, all ending or starting in Dubrovnik – the pearl of the eastern Adriatic in the south of the Republic of Croatia.

We are proud to present the Field Trip Guidebook of the third, now already traditional IAS Regional Meeting in Croatia that is organized every 20 years (1983, 2003, 2023, ...). We hope that you will enjoy the regional sedimentary geology, and that many of us will meet again somewhere in Croatia in 2043...

The Editors



Geology of the Old Town of Dubrovnik

Tvrtko Korbar, Tonći Grgasović and Ladislav Fuček

FIELD TRIP B1



Geology of the Old Town of Dubrovnik

Tvrtko Korbar, Tonči Grgasović and Ladislav Fuček

Croatian Geological Survey, Department of Geology, HR-10000 Zagreb, Croatia tkorbar@hgi-cgs.hr

Abstract

The Old City of Dubrovnik is on the UNESCO World Heritage list and is recognized as the “Pearl of the Adriatic” that adorns the southern coastal part of the Dinaric Karst. Both the southern and northern elevated parts of the Old Town are built on Mesozoic carbonate rocks deposited on the Adriatic Carbonate Platform (AdCP). The carbonate bedrock is strongly deformed since major compressional deformations of the AdCP succession began in the Eocene during the early orogenic thrusting and formation of the External Dinarides fold and thrust belt. The late orogenic complex tectonic deformations are still ongoing, and the area is characterized by occasional strong seismicity. The deformed packages of stratified limestones and dolomites of the Old Town bedrock show sedimentological features typical of peritidal subtropical sedimentation on the AdCP, while rare key microfossils allow age determination. The northern part of the Old City is situated on the Lower Cretaceous limestones while the southern part is built on the Upper Cretaceous dolomites. The central low-lying part of the town is built on anthropogenic infill of a narrow late Holocene embayment characterized by superficial Quaternary sediments overlying the heavily fractured carbonate bedrock. The exposed karst cavities are mostly filled with speleothems, indicating long-term karstification and denudation. The southern rocky shore is in patches covered by thin recent supratidal aragonitic encrustations known as pelagosite. Since geodetic data and coastal geomorphological features indicate recent surface deformations, the newly discovered geological structure of the Old Town of Dubrovnik should be taken into consideration during regional seismo-tectonic investigations.

Introduction and geological setting

The Old Town of Dubrovnik is an iconic old city situated on the eastern Adriatic coast in southern Croatia (Fig. 1). Since 1979, the Old City of Dubrovnik has been included on the UNESCO World Heritage list, recognized as the “Pearl of the Adriatic” (<https://whc.unesco.org/en/list/95/>). The Old Town is not only built mostly of various types of stone that originated from the surrounding area (Belamarić, 2015), but also of imported dimension stone from the broader Mediterranean region, since the city has a millennial history. Such an exceptional architectural masterpiece certainly deserves a comprehensive detailed study on the origin of the building stone in the future.

Geomorphologically, the area belongs to the Dinaric Karst (Mihevc *et al.*, 2010; Pikelj & Juračić, 2013). Tectonically, the area belongs to the External Dinarides (Korbar, 2009; Fig. 1), a NW–SE striking fold-and-thrust belt built of deformed, exhumed and eroded Palaeozoic to Cenozoic predominantly carbonate rocks, most of which represent deposits of the Adriatic Carbonate Platform (AdCP, Vlahović *et al.*, 2005; see also field trip A1, this volume). The carbonate successions were detached from the Adriatic microplate (Adria) upper crust during the early orogen-

ic thin-skinned phase of the Alpine orogeny in the region (Schmid *et al.*, 2008).

One of the regional tectonic models imply a main regional, late orogenic, right-lateral (dextral) fault zone striking NW–SE along the coastal mountain belt of the external Dinarides, while left-lateral (sinistral) WNW–ESE striking faults are conjugated to the main one (Picha, 2002). The system could be active, at least closer to the main Dinaric fault zone, as documented in the area NW of Dubrovnik (Govorčin *et al.*, 2020), although the authors did not connect the seismic event with the left-lateral faults proposed earlier (Picha, 2002). The fault system could accommodate up to 5 mm/year northward movement of Adria (Bennett *et al.*, 2008), and is either derived from a basal thrust (Schmitz *et al.*, 2020), or dissects the thin-skinned structures along the regional thick-skinned crustal transpressional zones (Picha, 2002; Korbar, 2009). However, the two active tectonic patterns are not necessarily mutually exclusive, but may rather coexist laterally along the strike of the External Dinarides.

Regardless of which active tectonic regime prevails in the area, it occasionally causes strong earthquakes (Herak *et al.*, 1996; Kuk *et al.*, 2000; Markušić *et al.*, 2017). Besides, active surface deformations are



Fig. 1. A) Overview map of the central–northern Mediterranean showing the main orogenic fronts of the indicated fold-and-thrust belts, and the location of Dubrovnik. B) Panoramic view of the Old Town of Dubrovnik from the north (Srđ hill): 1 – southern bedrock ridge, 2 – central filled and flattened part, and 3 – northern bedrock ridge (cf. Stanko *et al.*, 2023; see Fig. 2).

reported from the wider area in the Old Town of Dubrovnik. While uplifted tidal notches indicate historical co-seismic uplift (Faivre *et al.*, 2021), geodetic data indicate recent (inter-seismic) subsidence of the area (Grgić *et al.*, 2020). Therefore, further terrestrial geological mapping and analyses of subsurface geological data in the wider area (e.g., Šolaja *et al.*, 2022) are crucial for a better definition of the active faults and the kinematics in the region.

The general geological structure of the Dubrovnik area is shown on the "Dubrovnik" sheet of the Basic Geological Map of the former Yugoslavia at 1:100,000 scale (Marković, 1971). This is the only sheet covering predominantly the territory of Croatia that was compiled by Serbian geologists, without collaboration with Croatian experts. Later regional investigations and local studies that included geology were based mostly on the geological data from the official

map. The local geotechnical research (Građevinski institut, 1981) included numerous boreholes, drilled through the superficial deposits down to the bedrock in the central flatten part of the Old Town, thus improving the knowledge of the local geology.

The latest geological research in the Old Town (Stanko *et al.*, 2023) resulted in the recognition of known regional lithostratigraphic units and their more complex geological relationships than shown on the official geological map (Fig. 2). The results imply a more complex tectonic structure in the wider area of Dubrovnik than previously considered. Furthermore, the newly discovered faults are very important for regional structural-tectonic and seismotectonic investigations in the area. This guide includes important new Micropalaeontological evidence and a description of the general sedimentological characteristics of the lithostratigraphic units, as

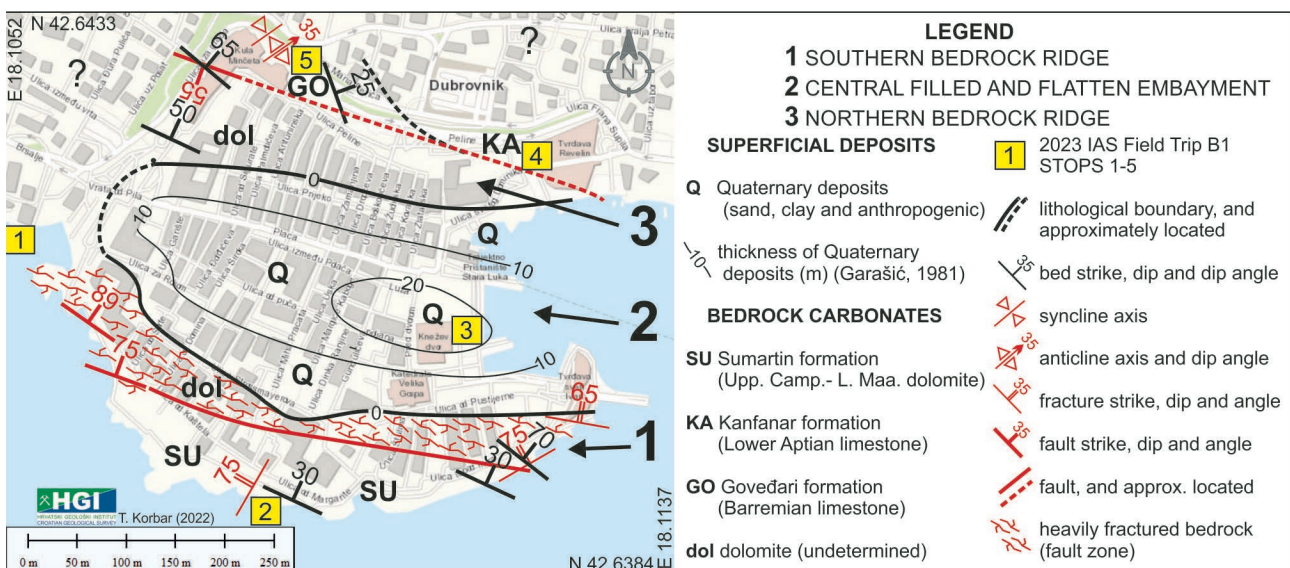


Fig. 2. A schematic geological map of the Old Town of Dubrovnik (modified after Stanko *et al.*, 2023) and field trip stops (yellow highlight): 1 – Lovrijenac, 2 – Buža, 3 – The Old Town Port, 4 – Revelin, 5 – Miščeta. Topographic background: World Topo Map.

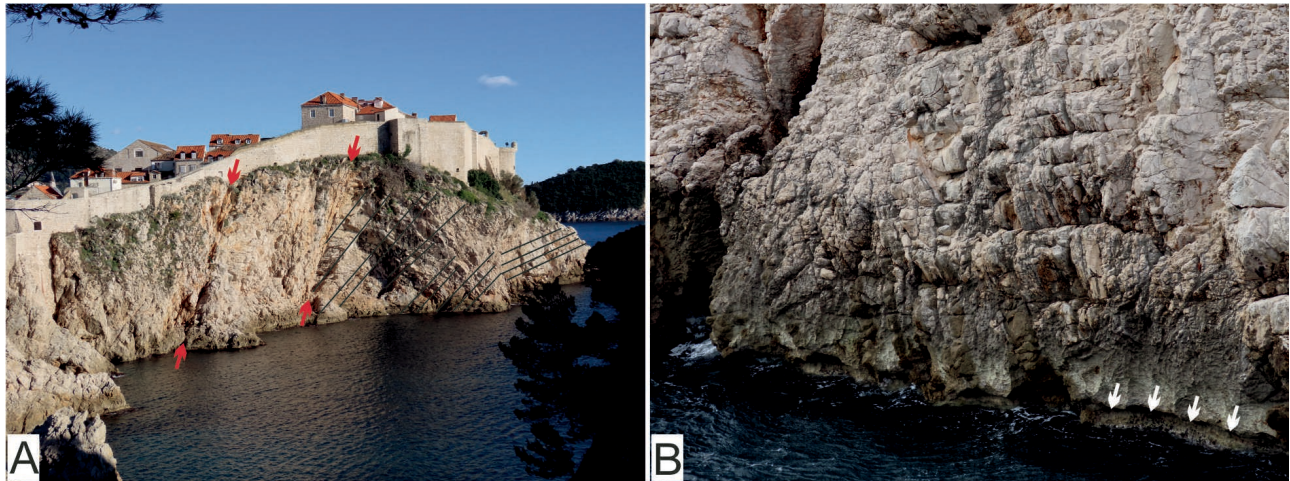


Fig. 3. A) The view from the west (from the Lovrijenac Fortress) to the southern bedrock ridge of the Old Town of Dubrovnik. Note the heavily fractured reddish-coloured bedrock dolomites along the WNW–ESE striking fault zone and the steeply inclined fault planes (indicated by red arrows). Thick-bedded Maastrichtian dolomite south of the fault zone (bedding planes are marked by black lines). B) Coastline west of Lovrijenac Fortress. Note the tidal notch that is above the mean sea level (white arrows).

well as other geological and geomorphological features of this historic urban area.

Description of the stops

the Old Town of Dubrovnik is built on three geomorphological and geological entities: the southern bedrock ridge, a central filled and flattened part (former embayment), and the northern bedrock ridge (Fig. 2; Stanko *et al.*, 2023). The bedrock carbonates were deposited during the Cretaceous as part of the Adriatic Carbonate Platform (AdCP) succession (Gušić & Jelaska, 1990; Vlahović *et al.*, 2005), and were strongly deformed during the Dinaric orogeny (Korbar, 2009). The superficial deposits cover the bedrock palaeorelief in the central part of the Old Town, and represent the Quaternary infill of a former small valley striking E–W. The valley was initially filled by (lacustrine?) clay that is overlain by sand. The sand was once at the bottom of the embayment that was formed during late Holocene sea level rise. The embayment was finally flattened by anthropogenic deposits for the purpose of extension of the city area (Jelić, 1994).

Stop 1. Lovrijenac: Southern bedrock ridge

The southern bedrock ridge is built of brownish-grey, thick-layered predominantly crystalline dolomites (Fig. 2). A few steeply NNE dipping fault planes strike along the northern belt of the ridge and delimit the northern heavily tectonically fractured crystalline dolomites on the north from the succession of well-bedded dolomites along the southern coast (Fig. 3A).

The coastline around the Lovrijenac Fortress is characterized by a well-preserved tidal notch that is tens of centimetres above the mean sea-level (Surić

et al., 2014; Fig. 3B), although geodetic data show clear recent inter-seismic subsidence of the area (Grgić *et al.*, 2020). The discrepancy implies a potentially significant historic co-seismic uplift of the bedrock.

Stop 2. Buža: Bedrock dolomites, speleothems and pelagosite

There are passages (*buža* in the local dialect means a hole) through the Old Town walls that allow access to the southern coast built of the well-bedded dolomite bedrock that is inclined generally to the NE (Figs. 3A and 4). A succession of thick-bedded, brownish-grey dolomite more than 50 m thick is characterized mostly by a microcrystalline structure with numerous fenestrae and bioturbated horizons. Light-grey horizons (bands) are dolomites characterized by preserved structures (Fig. 4C), e.g. dolowackestones and dolopackstones rich in shallow-water microfossils: benthic foraminifera and algae. Synsedimentary, in situ disintegration of some thin layers led to the formation of intraformational breccia that are observed in places (Fig. 4D).

The exposed formerly open fractures and karst caverns within the dolomites are filled by reddish-brown speleothems (Fig. 4B). The fractures were thus formed during the older palaeotectonic events, while former karst cavities indicate long-term karstification and surface denudation (corrosion).

The southern rocky shore is in patches covered by recent, black, microstromatolitic encrustations known as pelagosite, up to a few metres above the mean sea-level, (Figs. 4E–F). Pelagosite is a type of microbialite – specific morphological and sedimentological form of aragonite with up to 2% of organic



Fig. 4. A) Dubrovnik Old Town walls and a succession of peritidal dolomites at Buža (southern bedrock ridge). B) Reddish-brown speleothems fill the former karst cavern in dolomites. C) Thick-bedded grey dolomites. The light-grey bands are dolomites characterized by preserved structures. D) Intraformational syndimentary breccia composed of fragmented thin layers of light-grey dolomites. E) Black patches of supratidal aragonite crusts known as pelagosite. F) Close-up of the pelagosite.

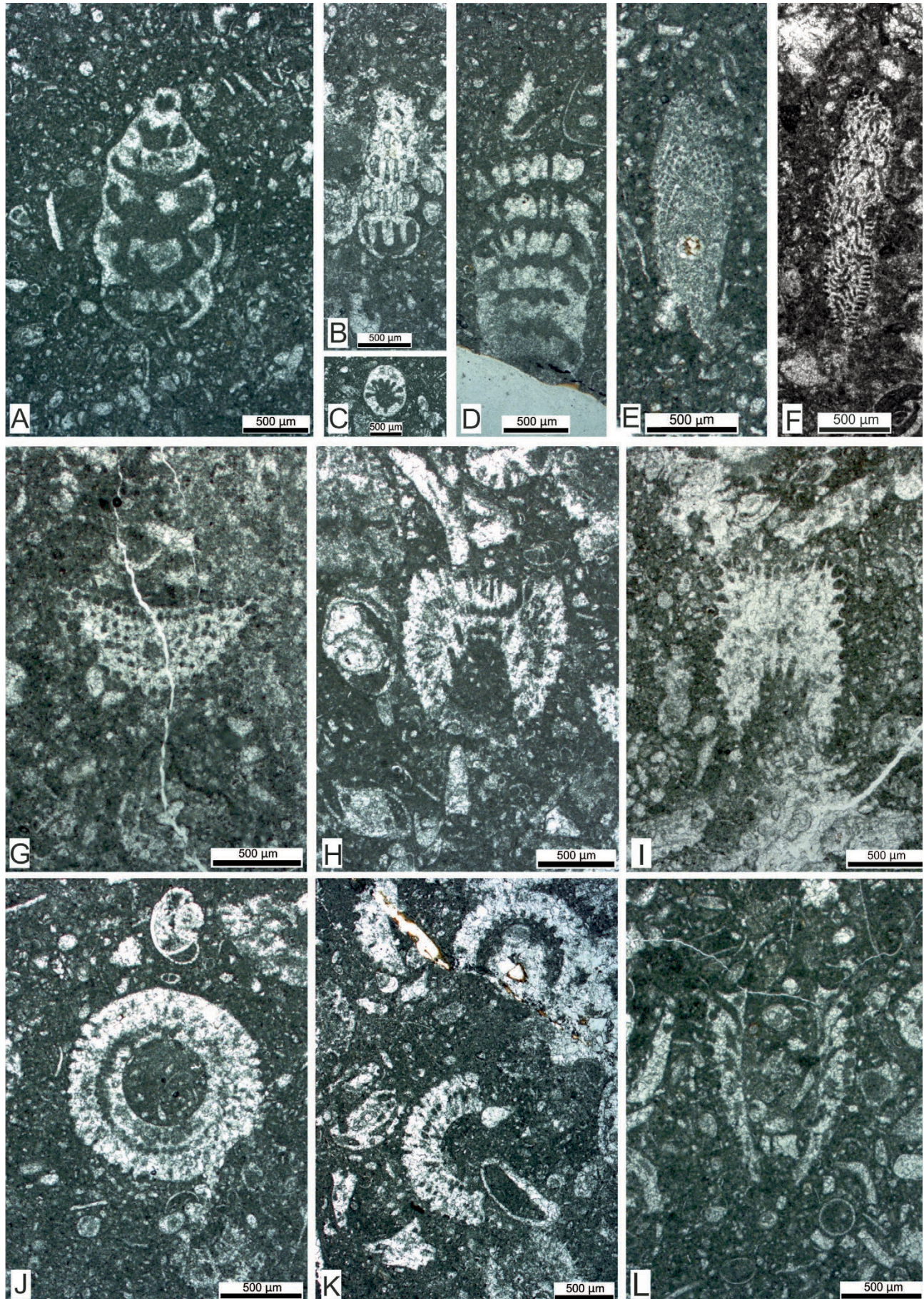


Fig. 5. Photomicrographs of the upper Campanian to lower Maastrichtian microfossils from the dolomite with preserved structures (Buža, southern coast of the Old Town Dubrovnik). A–D) *Rhapydionina* sp. E–F) *Sigalveolina renzi* (Fleury). G–I) *Pseudocymopolia anadyomenea* (Elliott). J–L) *Cymopolia* sp.

matter. Pelagosome crusts form in the supratidal zone (supralittoral) on the warmed rocky substrate exposed to the marine waves (splash zone). Specific biogeochemical processes that are supported by cyanobacteria led to the precipitation of aragonite on the places exposed to the sunlight that are frequently wetted by abundant sea spray (Montanari *et al.*, 2019).

The bedrock dolomite is sampled in the lower (coastal) part of the exposed succession at Buža (Fig. 4A). Micropalaeontological analyses of thin-sections revealed a relatively rich microfossil association of foraminifera and calcareous algae (Fig. 5). We determined the foraminifera *Rhapydionina* sp. and *Sigalveolina renzi* (Fleury). The genus *Rhapydionina* (Figs. 5A–D) is widely known from the peri-Adriatic upper Campanian to Maastrichtian inner-platform facies (Fleury, 2014), and is also proven in the biostratigraphy of the AdCP (Stache, 1889; Gušić & Jelaska, 1990; Velić, 2007). However, our material do not allow determination to species level. The genus *Sigalveolina* (Fleury, 2018), along with the species *S. renzi* (Figs. 5E–F; former *Murciella renzi*) is considered as a guide fossil for the “CsB6b” zone that has a stratigraphic range from the upper Campanian to the (?) lower Maastrichtian (Fleury, 2014). The species also appears in the lower part of the Sumartin formation on the island of Brač (Gušić & Jelaska, 1990) that is upper Campanian to lower Maastrichtian in age (Steuber *et al.*, 2005).

We also determined the Dasycladalian calcareous algae *Pseudocymopolia anadyomenea* (Elliott) and *Cymopolia* sp. (Figs. 5G–I). This is the first report of *P. anadyomenea* outside the Middle East where it is described from the Maastrichtian Tanjero Formation of Iraq (Elliott, 1959), and from the Late Maastrichtian Tarbur Formation of Iran (Rashidi & Schlagintweit, 2019). Relatively numerous sections of algae with vesiculiferous branches could be determined only at the generic level as *Cymopolia* sp. (Figs. 5J–L), since the material is mostly not well preserved and insufficiently abundant for more precise determination. It seems, however that this is a new species, since it differs from the upper Maastrichtian representatives of the genus *Cymopolia* (Parente, 1994, 1997).

According to the aforementioned microfossil association, the age of the well-bedded dolomites along the southern bedrock ridge is determined as upper Campanian to lower Maastrichtian. Thus, the succession of the peritidal dolomites at Buža is referred to the lower part of the Sumartin formation where dolomite prevails (Gušić & Jelaska, 1990).

Stop 3. The Old Town Port: Quaternary superficial deposits

According to the borehole and geophysical data (Građevinski institut, 1981; Fig. 2), the central, flattened part of the Old Town of Dubrovnik is filled by the Quaternary superficial deposits, which cover uneven and heavily fractured carbonate bedrock (Stanko *et al.*, 2023). The natural Quaternary sediments are up to 20 m thick in the central part of the city port (Fig. 6A), and are overlain by up to a few metres of anthropogenic deposit that fill the former, shallow, east–west trending embayment, which was open to the sea to the east (Jelić, 1994). The lower part of the natural sedimentary infill is predominantly clay while in the upper part sand prevails (Građevinski institut, 1981). The sand crops out along the coast north of the Old Town port (Fig. 6B).

Stop 4. Revelin: Lower Aptian limestones

In the eastern part of the northern bedrock ridge, in the basement of the Revelin Fortress, there is an outcrop of massive yellowish-grey limestone more than 20 m long (Fig. 7A). The massive limestone is composed predominantly of skeletal wackestones to packstones and oncoid floatstones that contain requieniid rudists as well as a rich microfossil assemblage.

The massive yellowish-brown micritic limestones contain a relatively rich microfossil association of benthic foraminifera, calcareous algae and fragments of rudist bivalves. Numerous sections of *Lithocodium–Bacinella* aggregates (Fig. 7B) as well as the foraminifera *Praechrysalidina infracretacea* Luperto Sinni, *Voloshinoides murgensis* Luperto Sinni and Masse, miliolids and other benthic foraminifera were found (Fig. 7C), along with rare low-conical orbitolinid foraminifera that most likely belong to the benthic foraminiferal species *Palorbitolina lenticularis* (Blumenbach) (Figs. 7D–E). The microfossil association indicates an upper Barremian to lower Aptian age (Velić, 2007).

Thus, the massive rock unit represents one of the most significant lithostratigraphic units within the Lower Cretaceous succession of the AdCP – the Kanfanar formation (Vlahović *et al.*, 2005). This unit marks the onset of the early Aptian oceanic anoxic event OAE-1a, and is used for correlation of the strata in the Tethyan realm (Huck *et al.*, 2010). The outcrop is probably conformably underlain by Barremian limestones cropping out west of Revelin, along the northern bedrock ridge, although the succession is not continuously exposed (Fig. 2; see Stop 5).

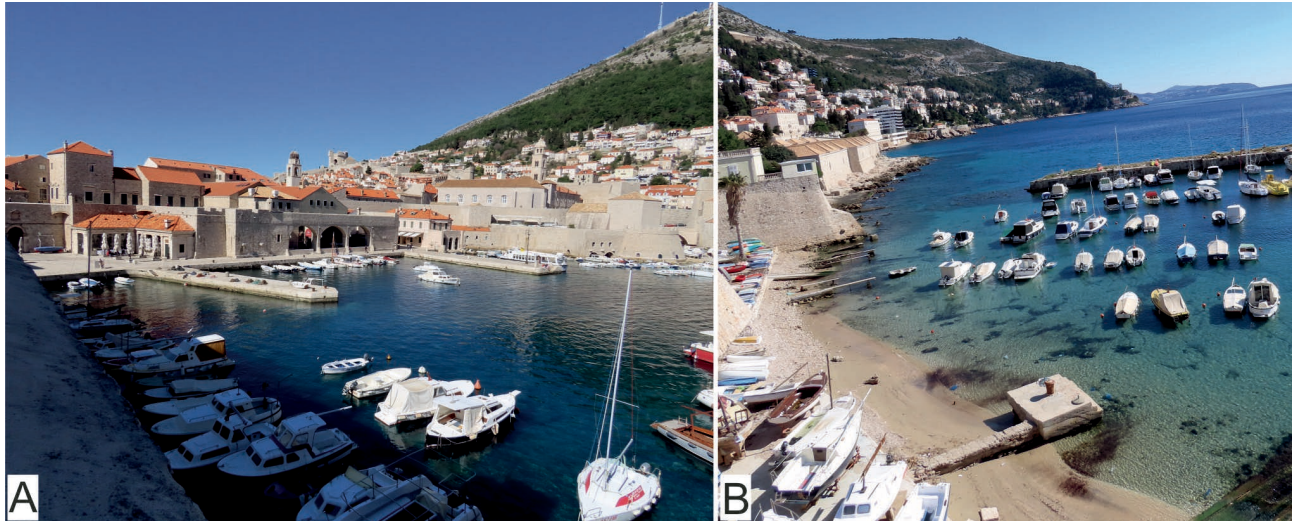


Fig. 6. A) Central part of the Old Town of Dubrovnik port. B) Outcrop of Quaternary sand along the northern coast of the port.



Fig. 7. A) Outcrop of massive yellowish-grey limestone in the basement of the Revelin Fortress (black arrow). B) Photomicrograph of a typical *Lithocodium-Bacinella* biogenic structure. C) Photomicrograph of *Praechrysalidina infracretacea* and *Voloshinoides murgensis*. D–E) Photomicrographs of low-conical orbitolinid foraminifera, the most probably *Palorbitolina lenticularis*.



Fig. 8. A) NE dipping thin to medium-thick bedded Lower Cretaceous peritidal limestones that comprise the northern bedrock ridge. Iza Grada Street is cut into the rock. Minčeta Tower is in the background. B) SW-NE striking anticline of the locally folded Lower Cretaceous peritidal limestones. Minčeta Tower is in the background.

Stop 5. Minčeta (Iza Grada Street): Northern bedrock ridge

The northern bedrock ridge is composed of bedded crystalline dolomites to the south and the well-bedded limestone to the north, and the layers of both units are generally inclined to the NE (Fig. 2). The lighter brownish-grey limestone succession is characterized by alternations of thicker layers of peloidal packstones and thinner layers of microbial laminites, and are referred to as the Lower Cretaceous (Barremian) Goveđari formation (Husinec, 2002; Husinec *et al.*, 2016). Locally, in the basement of the Minčeta Tower, the limestone succession is strongly folded perpendicular to the Dinaric strike (folds are of decameter amplitudes, Fig. 8).

The darker brownish-grey dolomite unit along the contact with the central flattened part of the Old

Town is undetermined, although it could be tentatively referred to the Lower Cretaceous Babino polje formation (Husinec, 2002). However, the geological situation is complicated by a fault at the contact with the overlying limestones (Fig. 2).

Acknowledgements

TK would like to thank to the SeisRICHerCRO project team (the Croatian Science Foundation project "Seismic Risk Assessment of Cultural Heritage Buildings in Croatia", HRZZ IP-2020-02-3531) for the support during the fieldwork. The authors thank the Croatian Geological Society for additional financial support and the Croatian Geological Survey (HGI) Lab's technical staff for preparing the thin sections. Igor Vlahović provided the final comments that improved this guide. ■

References

- Belamarić, J.** (2015) Kamen istočnog Jadrana (The stone of the eastern Adriatic), Javna ustanova ReraST, 128 pp, Split (English version in 2016).
- Bennett, R.A., Hreinsdóttir, S., Buble, G., Bašić, T., Bačić, Ž., Marjanović, M., Casale, G., Gendaszek, A. and Cowan, D.** (2008) Eocene to present subduction of southern Adriatic mantle lithosphere beneath the Dinarides. *Geology*, **36**/1, 3–6.
- Elliott, G.F.** (1959) New calcareous algae from the Cretaceous of Iraq. *Revue de Micropaléontologie*, Paris, **1**/4, 217–222.
- Faivre, S., Bakran-Petricioli, T., Herak, M., Barešić, J. and Borković, D.** (2021) Late Holocene interplay between co-seismic uplift events and interseismic subsidence at Koločep island and Grebeni islets in the Dubrovnik archipelago (southern Adriatic, Croatia). *Quaternary science reviews*, **274**, 1–16.
- Fleury, J.-J.** (2014) Données nouvelles sur *Rhapydionina* STACHE, 1913 et *Fanrhapydionina* n. gen., un groupe de Rhapydioninidae (Alveolinacea, Foraminifera) foisonnant en région périadriatique au Campanien-Maastrichtien. *Geodiversitas*, Paris, **36**/2, 173–208.
- Fleury, J.-J.** (2018) Rhapydioninidés du Campanien-Maastrichtien en région méditerranéenne: Les genres *Murciella*, *Sigalveolina* n. gen. et *Cyclospseudodomia*. *Carnets Geol.*, **18**/11, 233–280.

- Garašić, M.** (1981) Karta izolijnija jednakih dubina do vapnenca. In: Geotehnički istražni radovi i seizmička mikrorajonizacija stare gradske jezgre Dubrovnika, Geomehnička istraživanja (Knjiga III), Fakultet građevinskih znanosti Sveučilišta u Zagrebu, Zavod za geotehniku, Prilog 5.7, Zagreb (in Croatian).
- Govorčin, M., Herak, M., Matoš, B., Pribičević, B. and Vlahović, I.** (2020) Constraints on complex faulting during the 1996 Ston–Slano (Croatia) earthquake inferred from the DInSAR, seismological, and geological observations. *Remote Sens.*, **12**, 1157.
- Građevinski institut** (1981) Geotehnički istražni radovi i seizmička mikrorajonizacija stare gradske jezgre Dubrovnika, Geomehnička istraživanja, Fakultet građevinskih znanosti Sveučilišta u Zagrebu, Zavod za geotehniku (in Croatian).
- Grgić, M., Bender, J. and Bašić, T.** (2020) Estimating vertical land motion from remote sensing and in-situ observations in the Dubrovnik area (Croatia): A multi-method case study. *Remote Sens.*, **12**, 3543.
- Gušić, I. and Jelaska, V.** (1990) Stratigrafija gornjokrednih naslaga otoka Brača u okviru geodinamske evolucije Jadranske karbonatne platforme (Upper Cretaceous stratigraphy of the Island of Brač within the geodynamic evolution of the Adriatic carbonate platform). *Djela Jugoslavenske akademije znanosti i umjetnosti*, **69**, Institut za geološka istraživanja Zagreb, OOUR za geologiju, 160 pp.
- Herak, M., Herak, D., and Markušić, S.** (1996) Revision of the earthquake catalogue and seismicity of Croatia, 1908–1992. *Terra Nova*, **8**, 86–94.
- Huck, S., Rameil, N., Korbar, T., Heimhofer, U., Wiczorek, T.D. and Immenhauser, A.** (2010) Latitudinally different responses of Tethyan shoal-water carbonate systems to the Early Aptian oceanic anoxic event (OAE 1a). *Sedimentology*, **57** (7), 1585–1614, doi: 10.1111/j.1365-3091.2010.01157.x
- Husinec, A.** (2002) Stratigrafija mezozojskih naslaga otoka Mljet u okviru geodinamske evolucije južnoga dijela Jadranske karbonatne platforme. Unpublished PhD thesis, Zagreb University, 300 pp. (includes English Summary).
- Husinec, A., Prtoljan B., Fuček, L. and Korbar, T.** (2016) Osnovna geološka karta Republike Hrvatske mjerila 1:50 000 – list Otok Mljet. Hrvatski geološki institut, Zavod za geologiju, Zagreb, 1 list, ISBN: 978-953-6907-57-1. Available on: <https://www.hgi-cgs.hr/osnovna-geoloska-karta-150-000-geolosko-geografaska-podrucja/>
- Jelić, R.** (1994) Dubrovnik je nastao u uvali. *Naše more*, **41**, 3–4, 167–174 (in Croatian).
- Korbar, T.** (2009) Orogenic evolution of the External Dinarides in the NE Adriatic region: a model constrained by tectonostratigraphy of Upper Cretaceous to Paleogene carbonates. *Earth-Science Reviews*, **96**, 4, 296–312
- Kuk, V., Prelogović, E. and Dragičević, I.** (2000) Seismotectonically active zones in the Dinarides, *Geol. Croat.*, **53**(2), 295–303.
- Marković, B.** (1971) Osnovna geološka karta SFRJ 1:100.000, List Dubrovnik K34–49. Zavod za geološka i geofizička istraživanja, Beograd (1963–1965), Savezni geološki institut, Beograd. Available on: <https://www.hgi-cgs.hr/osnovna-geoloska-karta-republike-hrvatske-1100-000/>
- Markušić, S., Ivančić, I. and Sović, I.** (2017) The 1667 Dubrovnik earthquake – some new insights. *Stud. Geophys. Geod.*, **61**, 587–600.
- Mihevć, A., Prelovšek, M. and Zupan Hajna, N.** (2010, eds) Introduction to the Dinaric Karst, Postojna: Karst Research Institute at ZRC SAZU, Postojna, 71 pp., ISBN 978-961-254-198-9
- Montanari, A., Bice, D.M., Jull, A.J.T., Kudryavtsev, A.B., Malcalady, J.L., Schaperdoth, I., Sharp, W.D., Shimabukuro, D., Schopf, W.J. and Vučetić, V.** (2019) Pelagosite revisited: The origin and significance of a laminated aragonitic encrustation of Mediterranean supralittoral rocks. In: 250 Million Years of Earth History in Central Italy: Celebrating 25 Years of the Geological Observatory of Coldigioco (Koeberl, C., and Bice, D.M., eds), 501–532, *GSA Spec. Paper*, **542**, Boulder (Colorado).
- Parente, M.** (1994) *Cymopolia decastroi* n. sp. and *Cymopolia barattoloi* n. sp. from the Upper Maastrichtian of South-eastern Salento (Apulia, southern Italy) with some remarks on the problem of species definition in fossil Dasycladales. *Beitr. Paleont.*, **19**, 161–179.
- Parente, M.** (1997) Dasycladales from the Upper Maastrichtian of Salento Peninsula (Puglia, Southern Italy). *Facies*, **36**, 91–122.
- Pikelj, K. and Juračić, M.** (2013) Eastern Adriatic coast (EAC): Geomorphology and coastal vulnerability of a karstic coast. *J. Coast. Res.*, **29**(4), 944–957.
- Picha, F.J.** (2002) Late orogenic strike-slip faulting and escape tectonics in frontal Dinarides–Hellenides, Croatia, Yugoslavia, Albania and Greece. *AAPG Bulletin*, **86**/9, 1659–1671.
- Rashidi, K. and Schlagintweit, F.** (2019) New data on some type-species of Maastrichtian–Paleocene Dasycladales (Green algae) from Iran. Part I. Pseudocymopolia ELLIOTT, 1970. *Carnets Geol.*, **19**/6, 97–111.
- Schmid, S.M., Bernoulli, D., Fügenschuh, B., Matenco, L., Schefer, S., Schuster, R., Tischler, M. and Ustaszewski, K.** (2008) The Alps–Carpathians–Dinarides connection: a compilation of tectonic units. *Swiss J. Geosci.*, **101**, 139–183.
- Schmitz, B., Biermanns, P., Hinsch, R., Đaković, M., Onuzi, K., Reicherter, K. and Ustaszewski, K.** (2020) Ongoing shortening in the Dinarides fold-and-thrust belt: A new structural model of the 1979 (Mw 7.1) Montenegro earthquake epicentral region, *J. of Struct. Geol.*, **141**, 04192.
- Stache, G.** (1889) Die Liburnische Stufe und deren Grenzhorizonte. *Abhandlungen des Geologische Reichsanstalt*, **13**, 170 pp., Wien.
- Stanko, D., Korbar, T. and Markušić, S.** (2023) Evaluation of the local site effects and their implication to the seismic risk of the UNESCO World Heritage Site Old City of Dubrovnik (Croatia), *J. of Earthquake Eng.*
- Steuber, T., Korbar, T., Jelaska, V. and Gušić, I.** (2005) Strontium-isotope stratigraphy of Upper Cretaceous platform carbonates of the Island of Brač (Adriatic Sea, Croatia): implications for global correlation of platform evolution and biostratigraphy. *Cret. Res.*, **26**, 741–756.
- Surić, M., Korbar, T. and Juračić, M.** (2014) Tectonic constraints on the late Pleistocene–Holocene relative sea-level change along the north-eastern Adriatic coast (Croatia). *Geomorphology*, **220**, 93–103.
- Šolaja, D., Miko, S., Brunović, D., Ilijanić, N., Hasan, O., Papatheodorou, G., Geraga, M., Durn, T., Christodoulou, D. and Razum, I.** (2022) Late Quaternary Evolution of a submerged karst basin influenced by active tectonics (Koločep Bay, Croatia). *J. Mar. Sci. Eng.*, **10**, 881.
- Velić, I.** (2007) Stratigraphy and paleobiogeography of Mesozoic benthic foraminifera of the Karst Dinarides (SE Europe). *Geologia Croatica*, **60**/1, 1–113.
- Vlahović, I., Tišljar, J., Velić, I. and Matičec, D.** (2005) Evolution of the Adriatic Carbonate Platform: palaeogeography, main events and depositional dynamics. *Palaeogeography, Palaeoclimatology, Palaeoecology*, **220**/3–4, 333–360.

